



HEALTHY METROPOLITAN FOOD SYSTEMS THE PERI-URBAN ROLE

Michael Sands, Ph.D.
Liberty Prairie Foundation

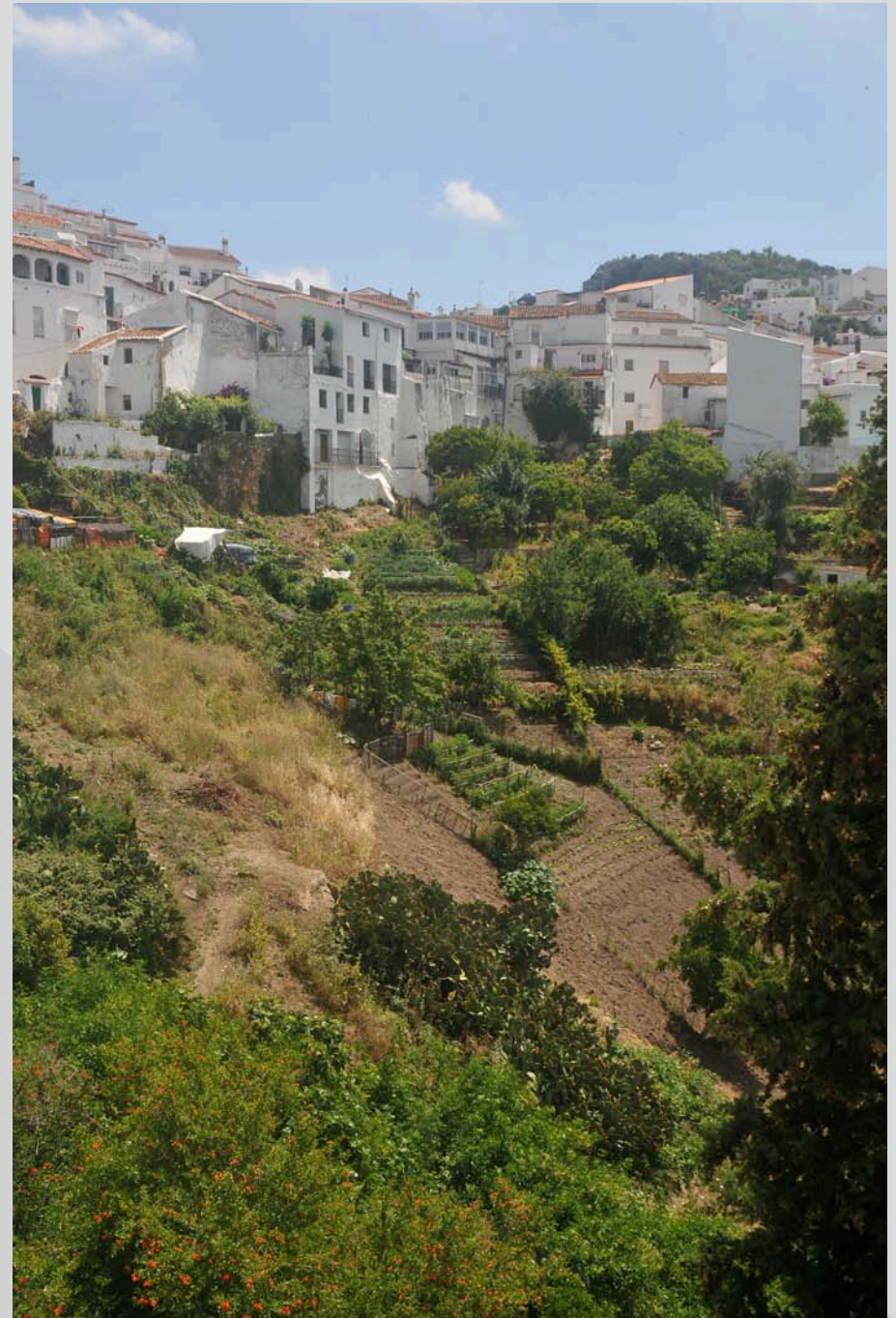
New Partners for Smart Growth, Feb 2, 2012



The Farm Business Development Center is partially supported by the Beginning Farmer and Rancher Development Program of the National Institute of Food and Agriculture, USDA, Grant # 2009-49400-05943

Historical Perspective

1. Food production has always been part of urban development
2. Finding the appropriate land has always been a challenge
3. While urban production is important, the scale needed for larger volume local production is best suited to the peri-urban edge.
4. Appropriate development can provide a unique opportunity



What Opportunities Exist in Peri-Urban Zones?

Land

- ✓ Existing smaller farms
- ✓ Protected open space
- ✓ Institutional lands
- ✓ New communities

Infrastructure

- ✓ Roads
- ✓ Fertility amendments
- ✓ Suppliers

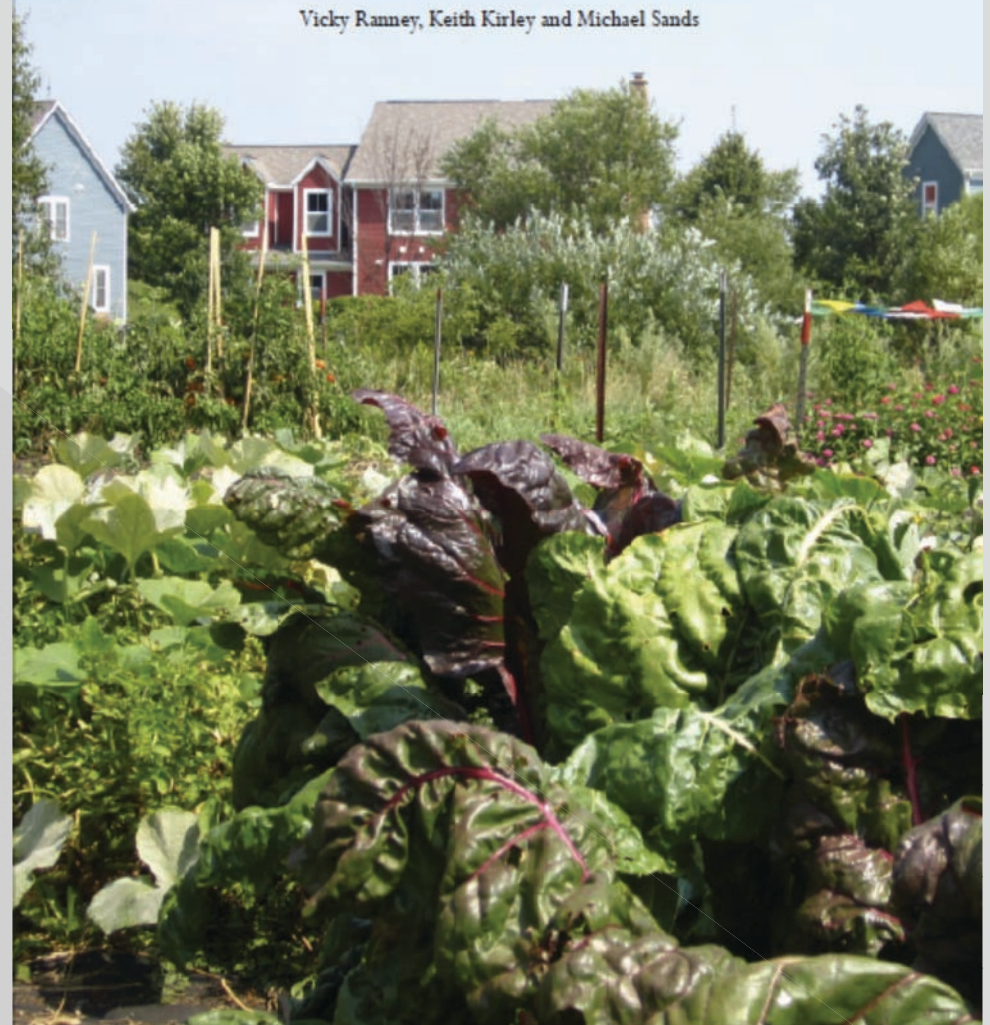
Communities

- ✓ Recent immigrants
- ✓ Recent farm connections

BUILDING COMMUNITIES WITH FARMS

*Insights from developers, architects and farmers on integrating
agriculture and development*

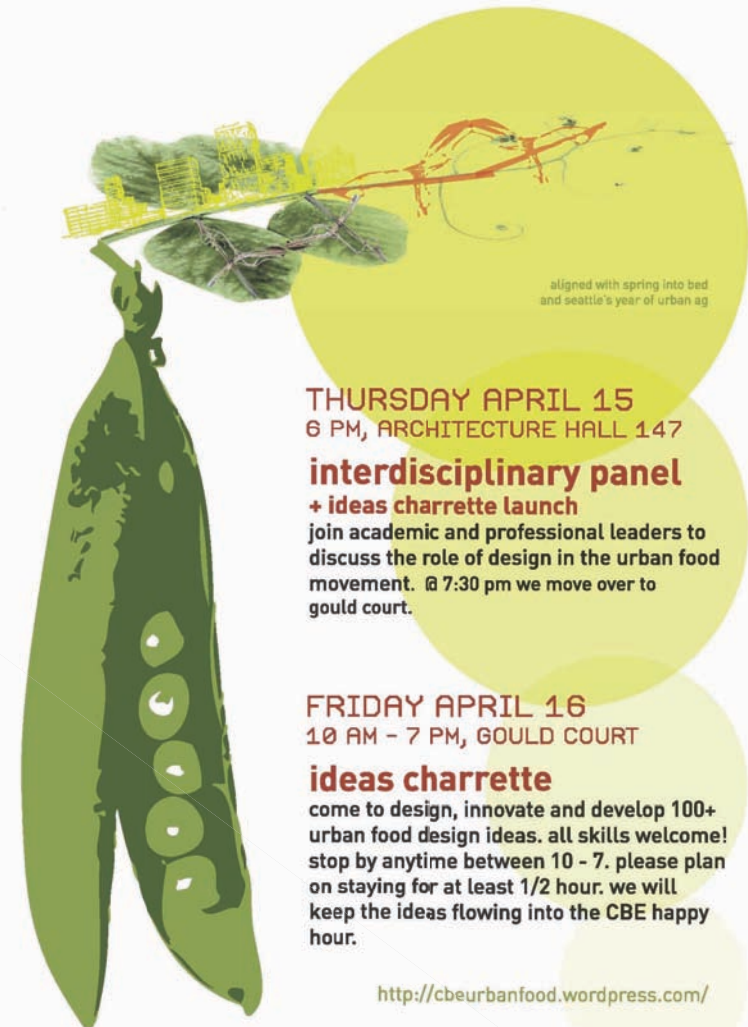
Vicky Ranney, Keith Kirley and Michael Sands



THE LIBERTY PRAIRIE FOUNDATION

What are the Primary Objectives in ?

- ✓ Food production?
- ✓ Diversity in Design?
- ✓ Quality of Life?
- ✓ Community Development?
- ✓ Jobs?



THURSDAY APRIL 15
6 PM, ARCHITECTURE HALL 147

interdisciplinary panel + ideas charrette launch

join academic and professional leaders to discuss the role of design in the urban food movement. @ 7:30 pm we move over to gould court.

FRIDAY APRIL 16
10 AM - 7 PM, GOULD COURT

ideas charrette

come to design, innovate and develop 100+ urban food design ideas. all skills welcome! stop by anytime between 10 - 7. please plan on staying for at least 1/2 hour. we will keep the ideas flowing into the CBE happy hour.

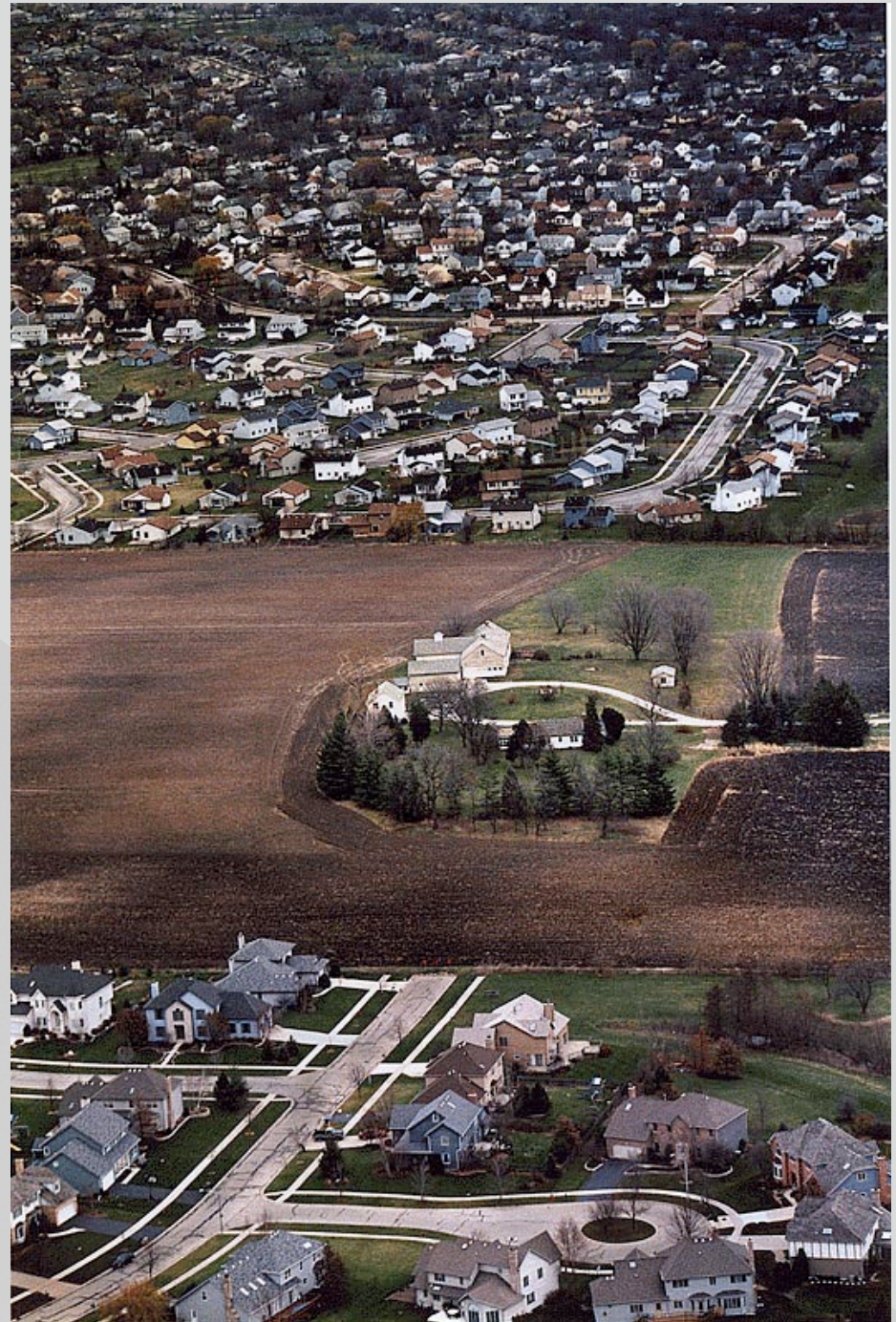
<http://cbeurbanfood.wordpress.com/>

DESIGNING FOR URBAN FOOD

UNIVERSITY OF WASHINGTON W COLLEGE OF BUILT ENVIRONMENTS

Assumption:

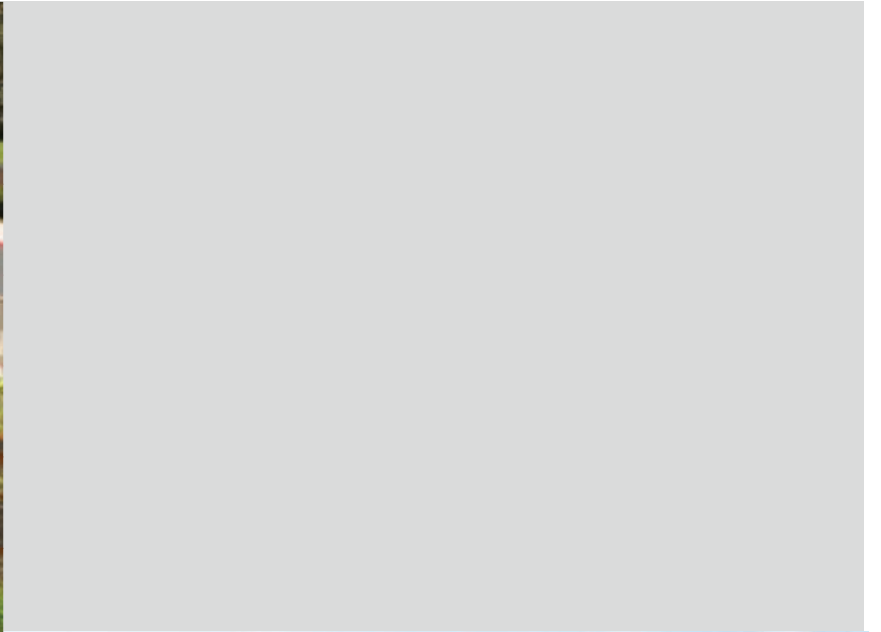
We are talking about food production as a long term or permanent land use

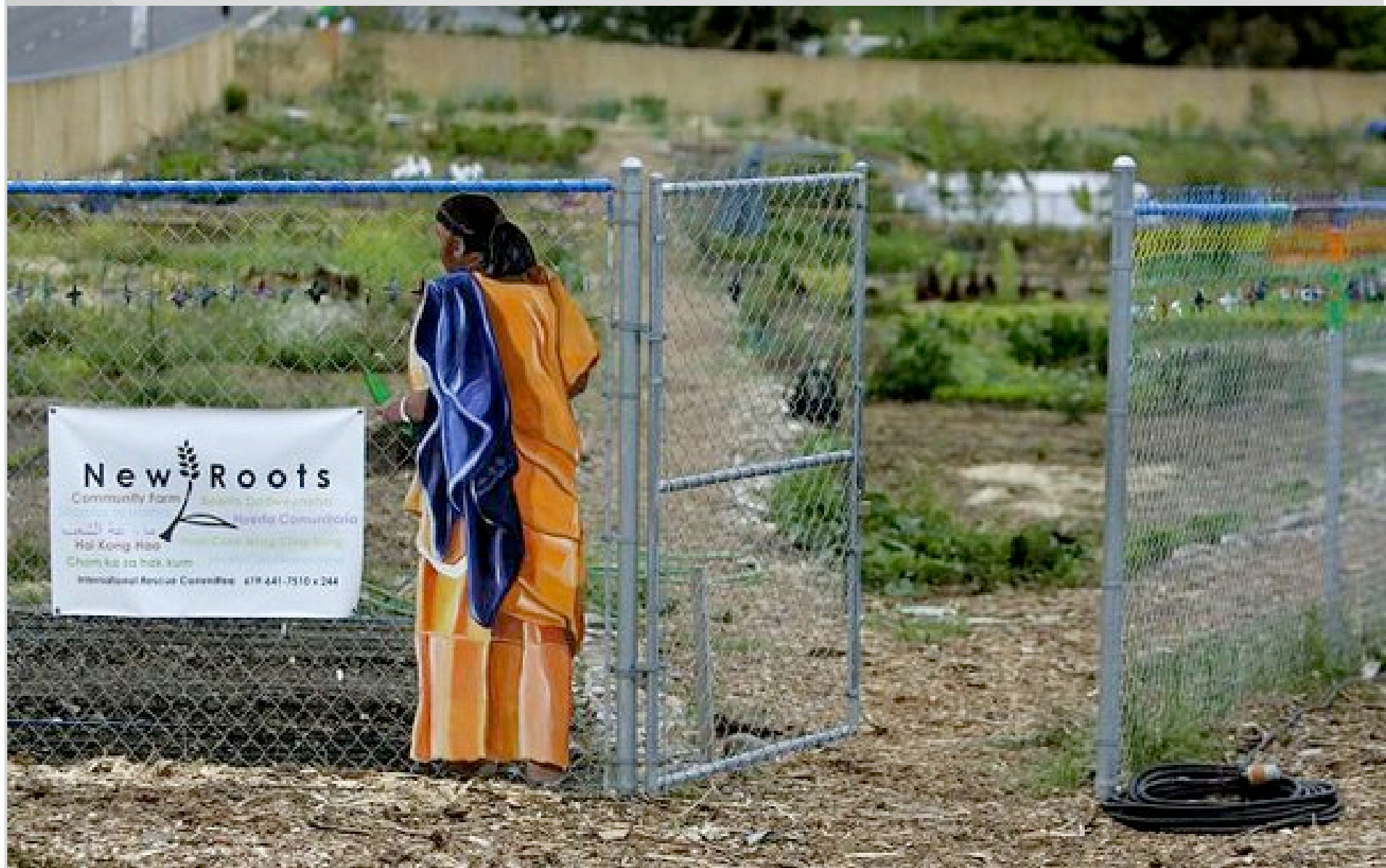


What is Appropriate Scale?

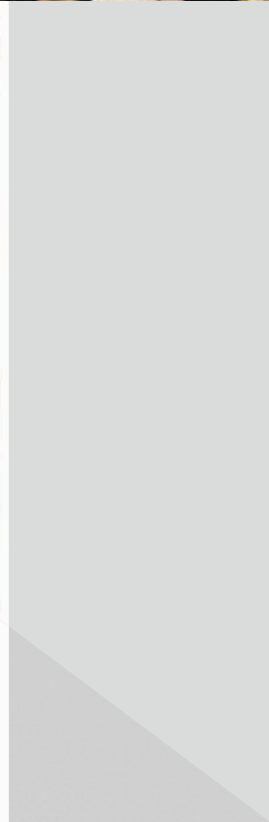
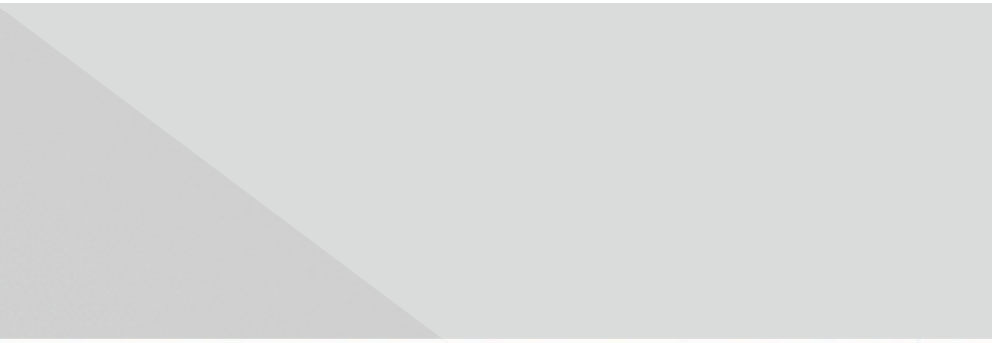
- ✓ Window box
- ✓ Front yard
- ✓ Community garden
- ✓ Rooftop gardens
- ✓ **Small subsistence farm**
(marketing primarily within community)
- ✓ **Commercial production**
(marketing to a larger community)
- ✓ Industrial (integrating across industrial processes and closing loops)









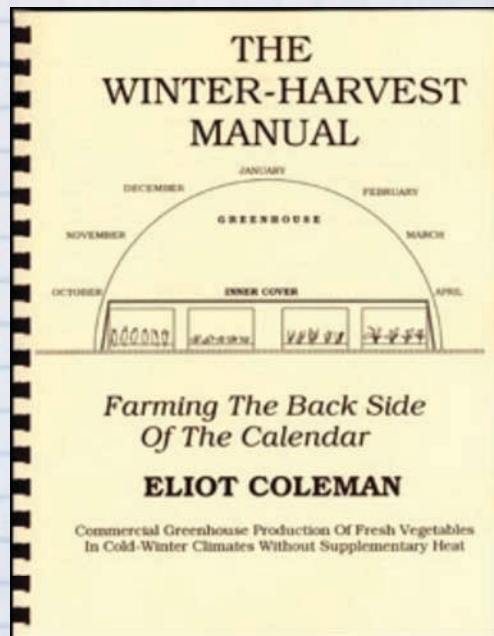


Prairie Crossing Farm



What is Appropriate Intensity?

- ✓ Seasonal amenity
- ✓ Season extension
- ✓ Year round production
- ✓ Livestock





**Appropriate
Livestock**





Aquaponics



What is the Business Model?

- ✓ Developer or community owned and managed
- ✓ Independent enterprise
- ✓ Non profit entity





Got to have good markets!





SNAP/EBT at your
FARMERS MARKET:
SEVEN STEPS to SUCCESS



**Got to Get High
Quality Fresh Produce
to Market!**



Where Do You Find The Right Farmers?

- ✓ New farmers
 - ✓ Liberal arts graduates
 - ✓ New immigrants
 - ✓ Traditional underserved
- ✓ Entrepreneurs
- ✓ Urban training programs
- ✓ Farm Business Development Center
- ✓ These are **BUSINESSES!**





Dea Dia Organics

at the Prairie Crossing Incubator

Fresh, locally grown, organic vegetables,
herbs and cut flowers

www.dea-dia.com

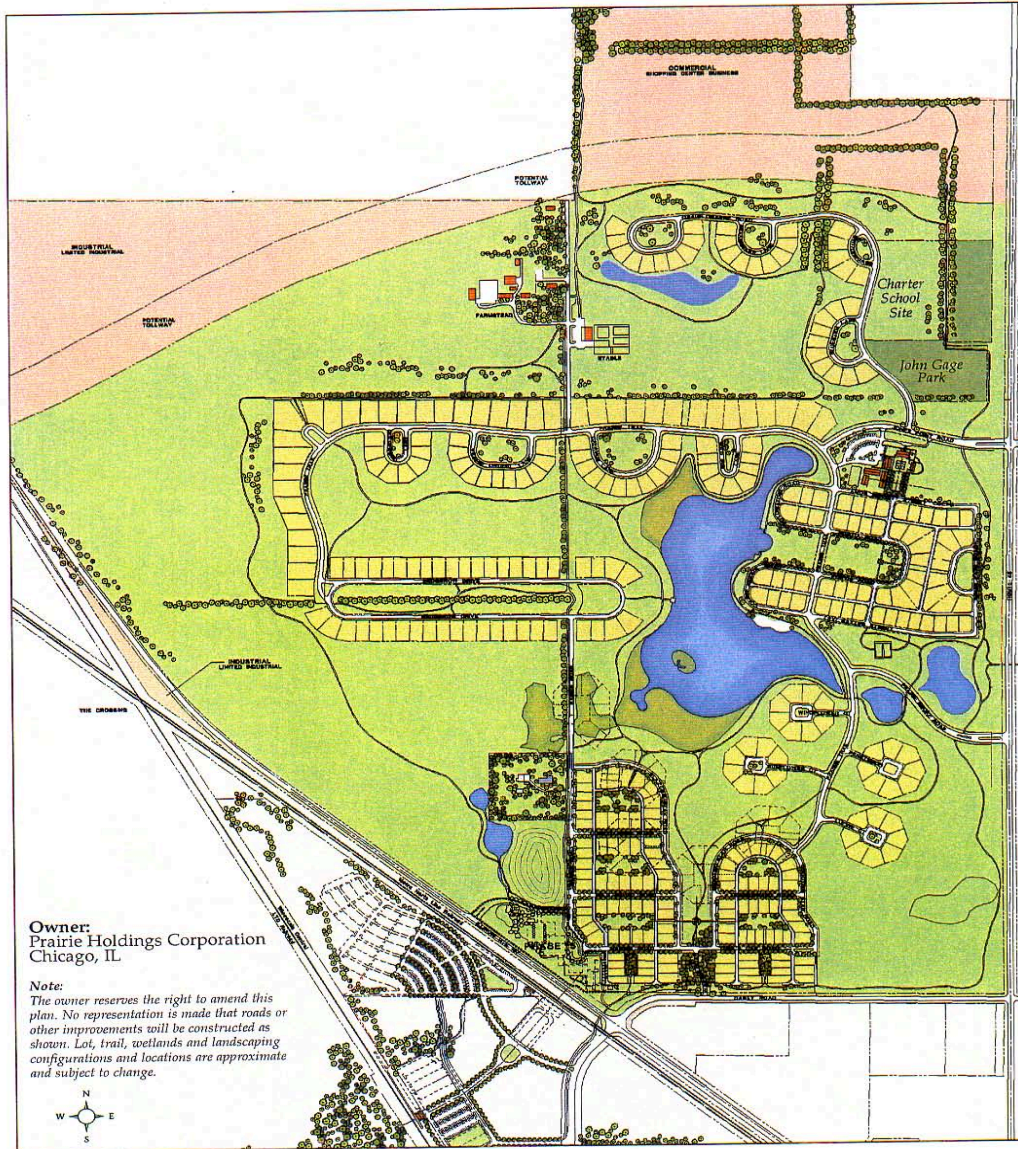
Farm Business Development Center

1. Business incubator for beginning farmers – presence of mentors
2. 60 acres of certified organic farmland
3. Allow beginning farmers to start their own businesses alongside other farmers
4. Reduce capital costs & convert to operational costs
5. Up to 5 acres
6. Up to 5 years



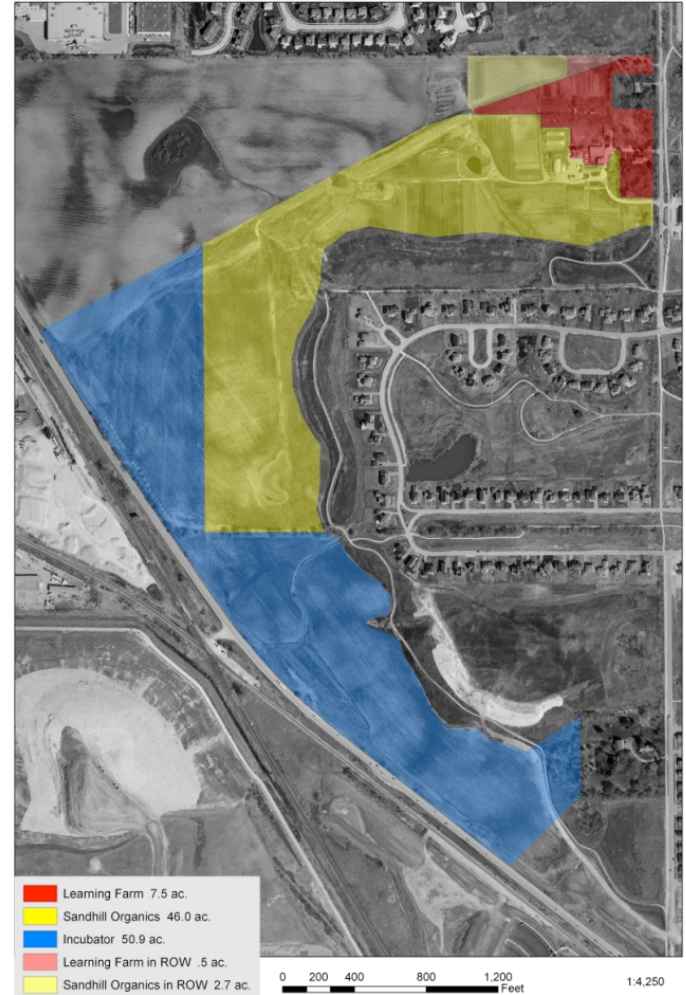
Prairie Crossing Plan 2000

January 2000



Skidmore, Owings & Merrill LLP
Calthorpe & Associates

Prairie Crossing Farmland



Take Aways?

There is incredible potential the peri-urban areas to supply significant amounts of food for urban populations.

Peri-urban food production systems provide opportunities to integrate communities

Finding and supporting new farmers is a critical need

Diversified food farming isn't often defined as "pretty". We have to celebrate the authentic experience.

Success is dependent on hard nosed business management.



THANK YOU



mikesands@prairiecrossing.com

847-812-1618

